

TEPLOTA VÝPALU: 1000°–1030° C

3 vrstvy
krystalické
glazury



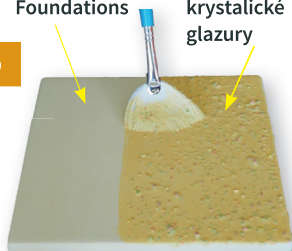
NEBO



1 vrstva barvy
Foundations



2 vrstvy
krystalické
glazury



Dózu dobře protřepejte a v průběhu aplikace stále průběžně míchejte.

Pomocí vějířového štětce naneste 3 vrstvy. Mezi jednotlivými vrstvami vždy nechte uschnout.

V případě, že použijete glazuru Foundations® jako podklad, nanáší se pouze 2 vrstvy, (krystalické glazury pak lépe drží).

Ve spodní části výrobku by nemělo být velké množství krystalů, aby během vypalování nic nestekly na pláty.

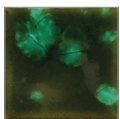


Krystalické glazury se vždy nanášejí z obou stran

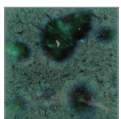
(na vnější i na vnitřní stranu, nahoru i dolů). V případě aplikace pouze na jednu stranu může docházet k přílišnému napínání a následnému popraskání keramiky.

Jungle Gems™

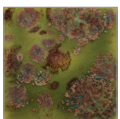
Crystal Glaze



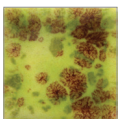
CG707
Woodland
Fantasy



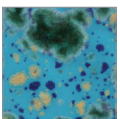
CG713
Peacock Green



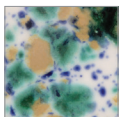
CG716
Pagoda Green



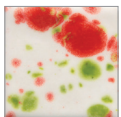
CG717
Pistachio



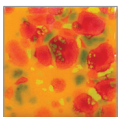
CG718
Blue Caprice



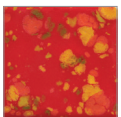
CG722
Seawind



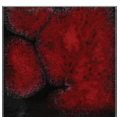
CG750
Noel



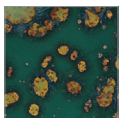
CG753
Sassy Orange



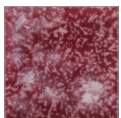
CG756
Firecracker



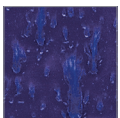
CG779
Black Opal



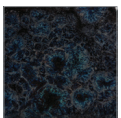
CG780
Mystic Jade



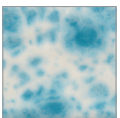
CG783
Strawberry
Sundae



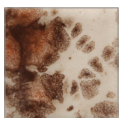
CG785
Royal Fantasy



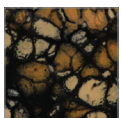
CG786
Obsidian



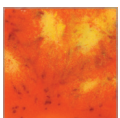
CG788
Dutch
Enamelware



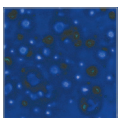
CG795
Yadro Print



CG798
Black Iris



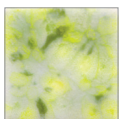
CG954
Wildfire



CG958
Lagoon Blue



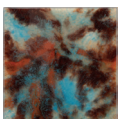
CG962
Blue Azure



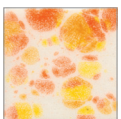
CG963
Lemon Lime



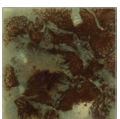
CG964
Kaleidoscope



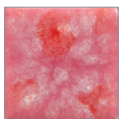
CG965
Mocha Marble



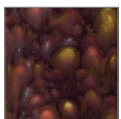
CG966
Tiger Lilly



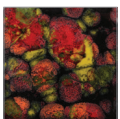
CG967
Green Agate



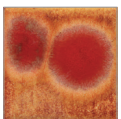
CG968
Peppermint
Twist



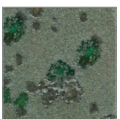
CG969
Floral Fantasy



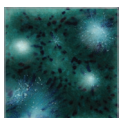
CG970
Masquerade



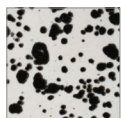
CG972
Dragon's Breath



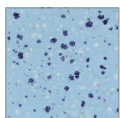
CG973
Alligator



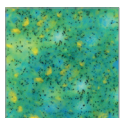
CG974
Blooming Blue



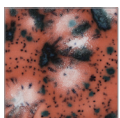
CG977
Ink Spots



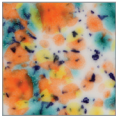
CG978
Arctic Splash



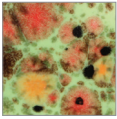
CG979
Meadow



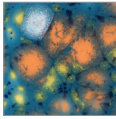
CG980
Coral Puff



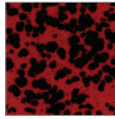
CG981
Fruity Freckles



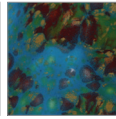
CG982
Mixed Melon



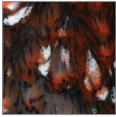
CG983
Koi Pond



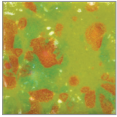
CG984
Ladybug



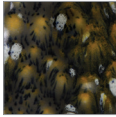
CG985
Monet's Pond



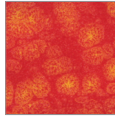
CG986
Smoke & Fire



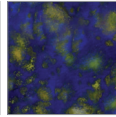
CG987
Tree Frog



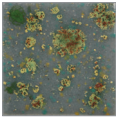
CG988
Fireflies



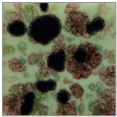
CG989
Fruit Punch



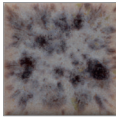
CG990
Starry Night



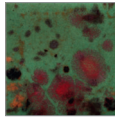
CG991
Mountain Moss



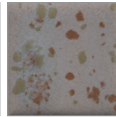
CG992
Mint Chip



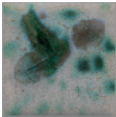
CG993
Lavender Sprigs



CG994
Field & Flowers



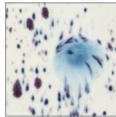
CG995
Froggy Mist



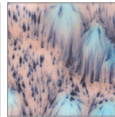
CG996
Spryng Rain



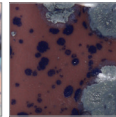
CG997
Sea Foam



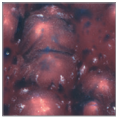
S-2701
Peacock Eyes



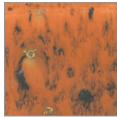
S-2702
Northern Lights



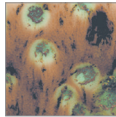
S-2703
Berrybery Pie



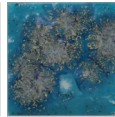
S-2704
Plum Jelly



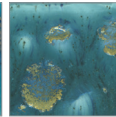
S-2708
Oriental Camel



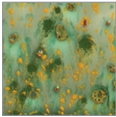
S-2709
Capuccino Mint



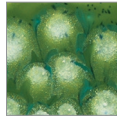
S-2711
Tahiti Grape



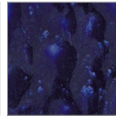
S-2712
Monsoon Seas



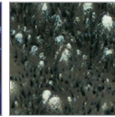
S-2714
Herb Garden



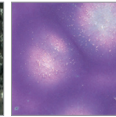
S-2715
Spotted Kiwi



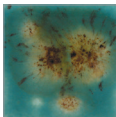
S-2716
Celestial Blue



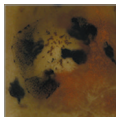
S-2718
Cosmic Black



S-2723
Grape Divine



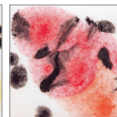
S-2724
Lotus Blossom



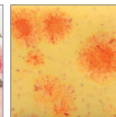
S-2725
Safari



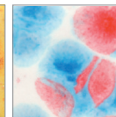
S-2726
Cheetah



S-2727
Poppy Fields



S-2729
Citrus Splash



S-2731
Kaboom

Jungle Gems™

TEPLOTA VÝPALU: 1000°–1030° C

➤ Glazura je vhodná pro styk s potravinami, vzhledem k vlastnostem povrchu se však doporučuje použití krystalických glazur pouze pro dekorativní keramiku.

★ Některé krystalické glazury lze vypalovat i při vyšších teplotách (do 1 220 °C). Na etiketě je uvedeno, zda se glazura při vyšších teplotách mění.



Zůstaly vám nějaké krystaly?

Jednoduše k nim přimíchejte trochu barvy Foundations.

Dbejte na pokyny uvedené na etiketě. Certifikáty bezpečnosti se liší vždy podle jednotlivých barev.



Z důvodu vlastností povrchu nevhodné k použití na jídelní nádobí.



Výrobky s pečeti AP společnosti „Art & Creative Materials Institute“ jsou certifikovány jako netoxické a nezávadné pro použití u všech věkových skupin.



Výrobky s pečeti CL společnosti ACMI obsahují toxické a nebezpečné látky, při dodržování pokynů uvedených na etiketě je ovšem možné bezpečně používat. Nevhodné pro děti do 12 let.